

## **Appendix 3. Bathymetry and sulfide spatial distribution maps for Component 2.**

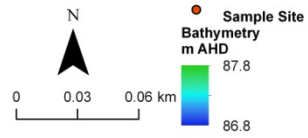


Figure 8-165. Bathymetry of channel at Site 1.

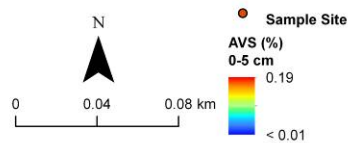
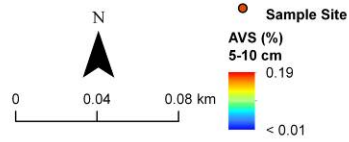
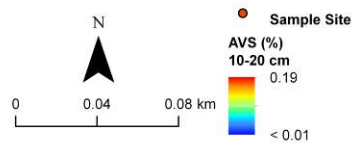


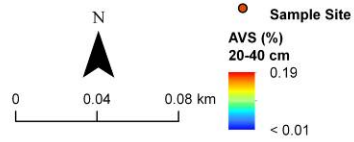
Figure 8-166. Spatial distribution of monosulfides at Site 1 (0-5 cm).



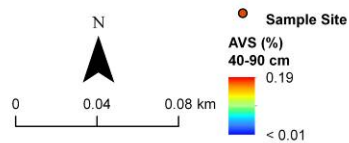
**Figure 8-167. Spatial distribution of monosulfides at Site 1 (5-10 cm).**



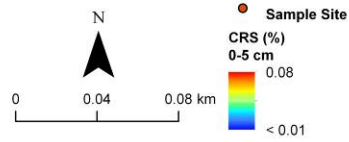
**Figure 8-168. Spatial distribution of monosulfides at Site 1 (10-20 cm).**



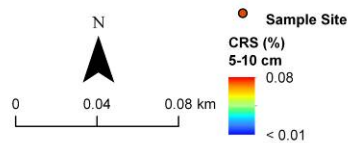
**Figure 8-169. Spatial distribution of monosulfides at Site 1 (20-40 cm).**



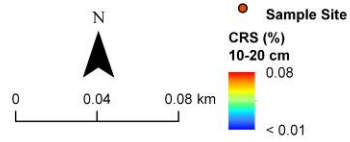
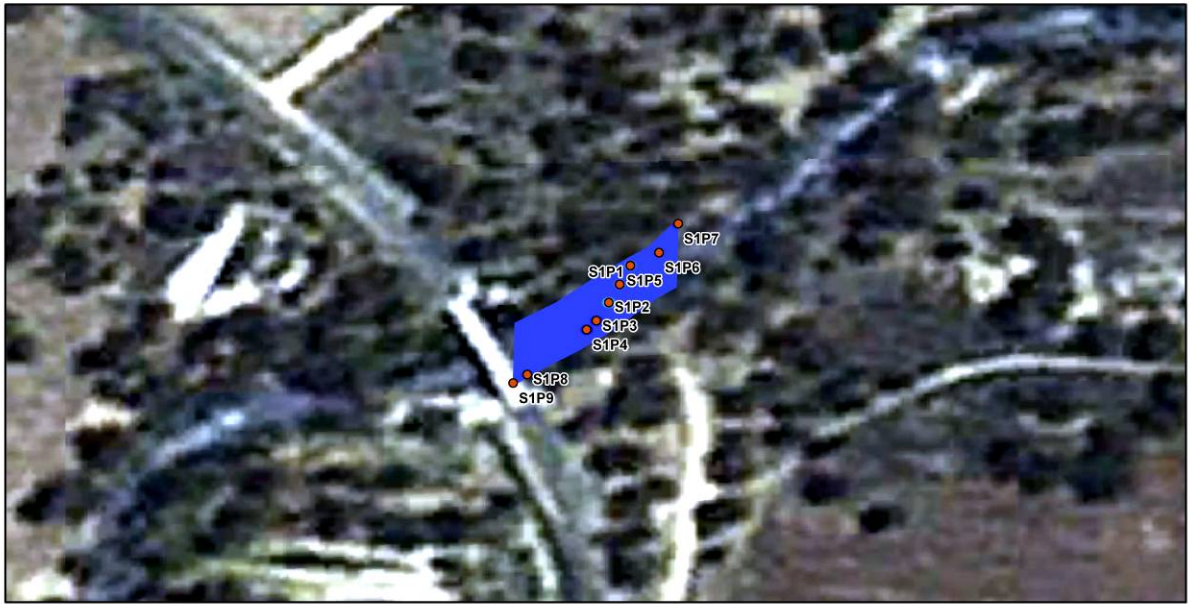
**Figure 8-170. Spatial distribution of monosulfides at Site 1 (40-90 cm).**



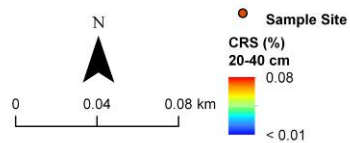
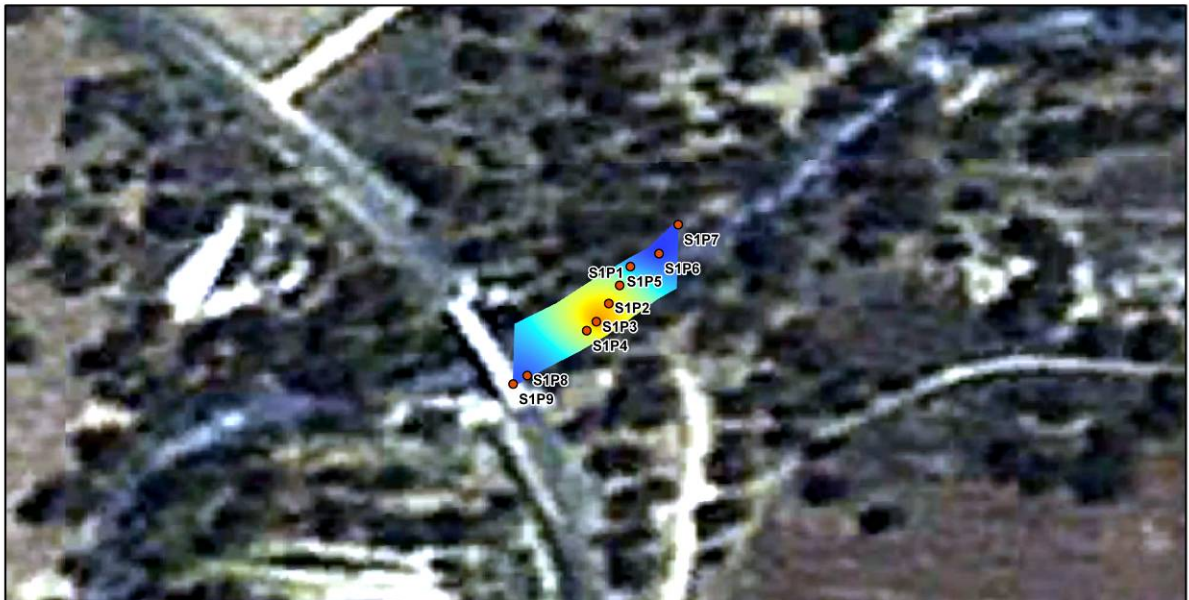
**Figure 8-171. Spatial distribution of sulfides at Site 1 (0-5 cm).**



**Figure 8-172. Spatial distribution of sulfides at Site 1 (5-10 cm).**



**Figure 8-173. Spatial distribution of sulfides at Site 1 (10-20 cm).**



**Figure 8-174. Spatial distribution of sulfides at Site 1 (20-40 cm).**

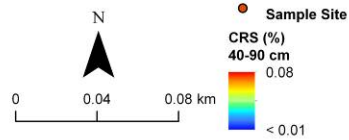


Figure 8-175. Spatial distribution of sulfides at Site 1 (40-90 cm).

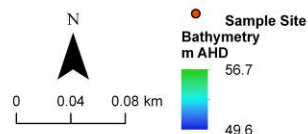
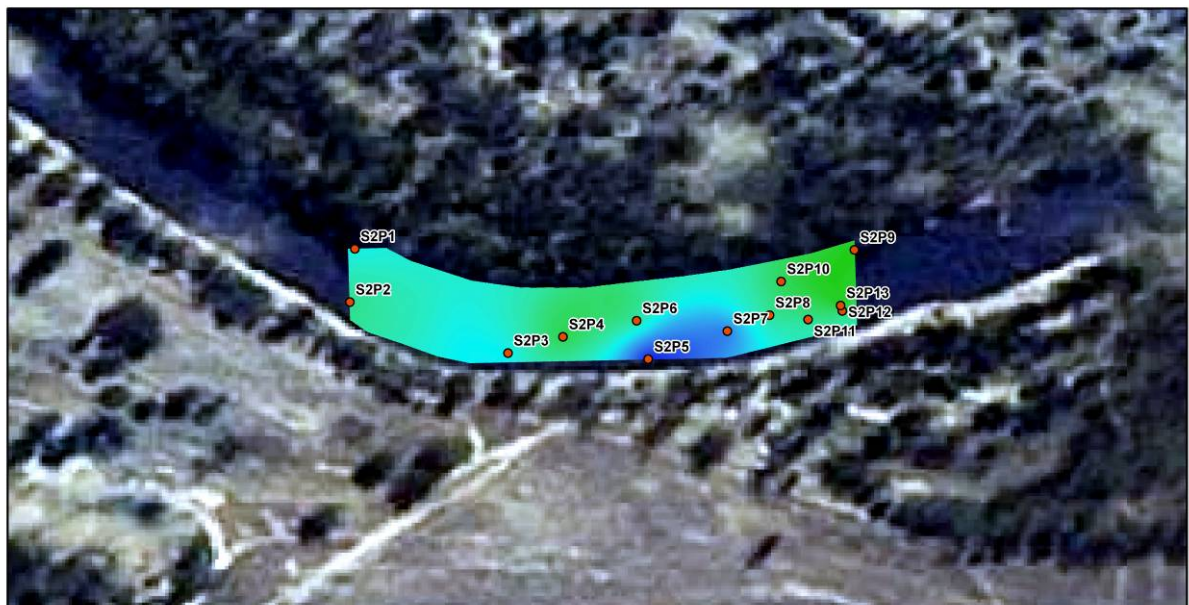
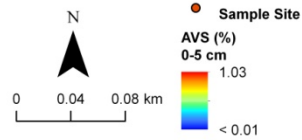
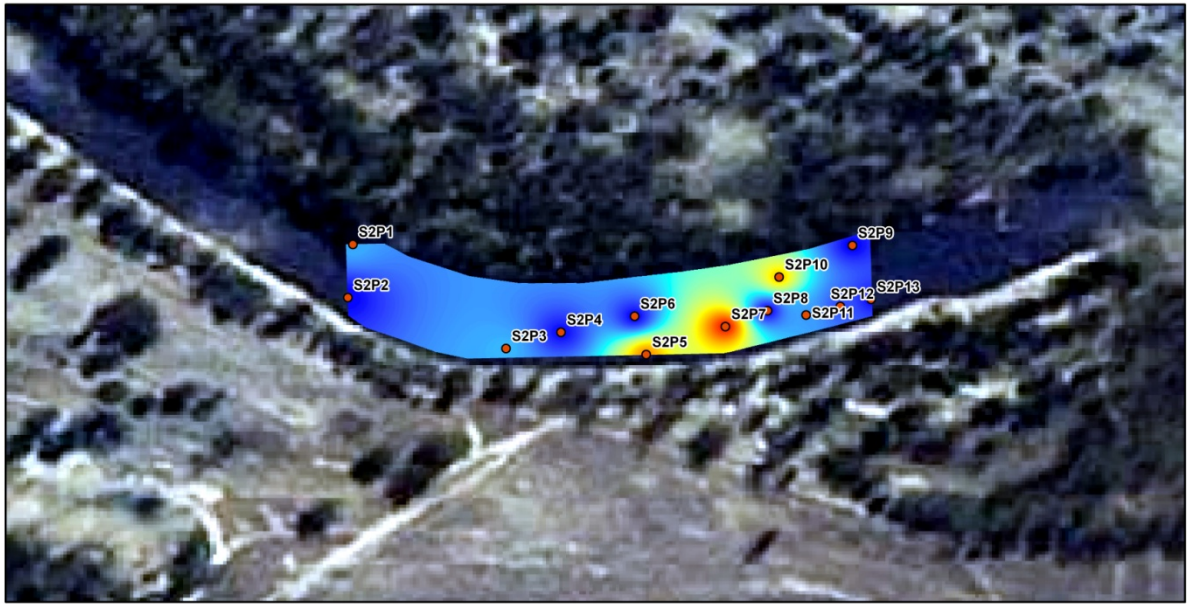
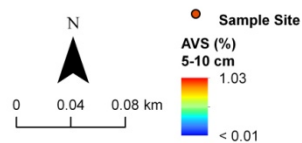
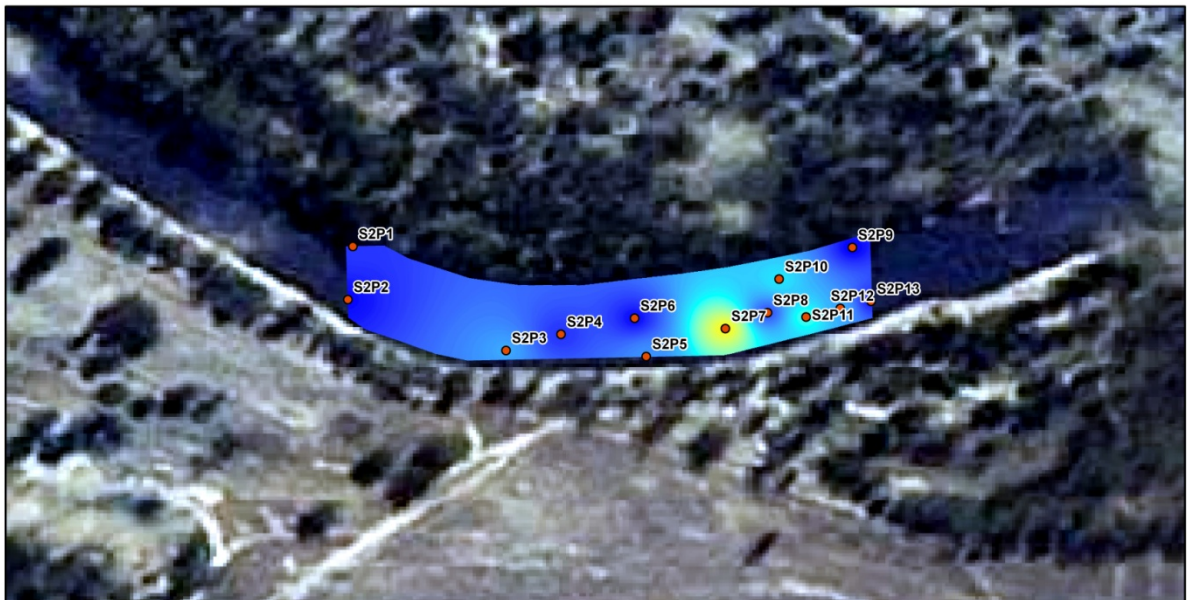


Figure 8-176. Bathymetry of channel at Site 2.

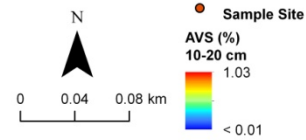
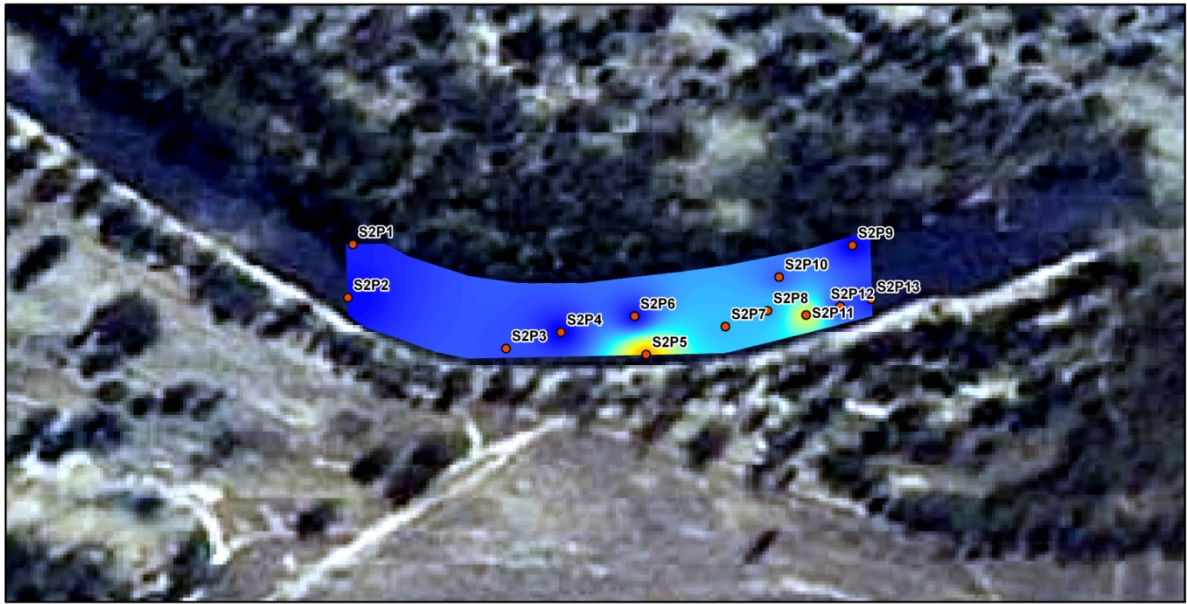


**Figure 8-177. Spatial distribution of monosulfides at Site 2 (0-5 cm).**

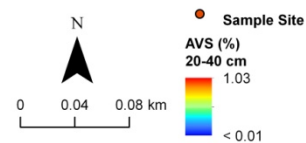
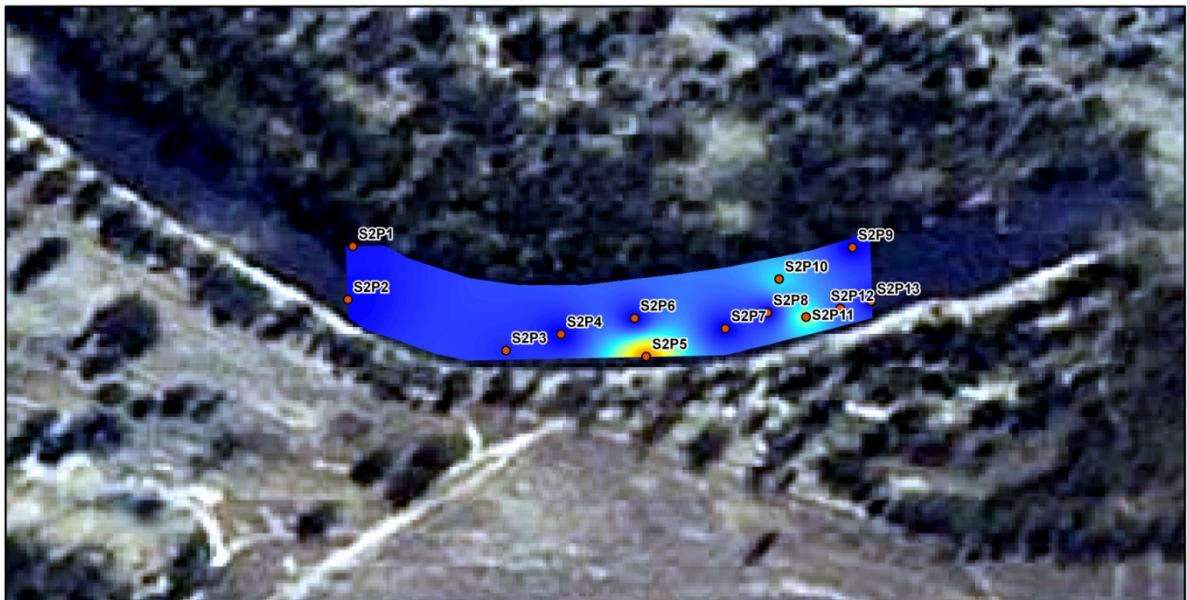


**Figure 8-178. Spatial distribution of monosulfides at Site 2 (5-10 cm).**





**Figure 8-179. Spatial distribution of monosulfides at Site 2 (10-20 cm).**



**Figure 8-180. Spatial distribution of monosulfides at Site 2 (20-40 cm).**

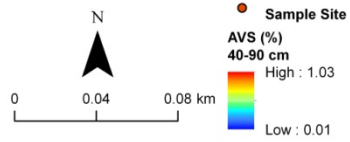
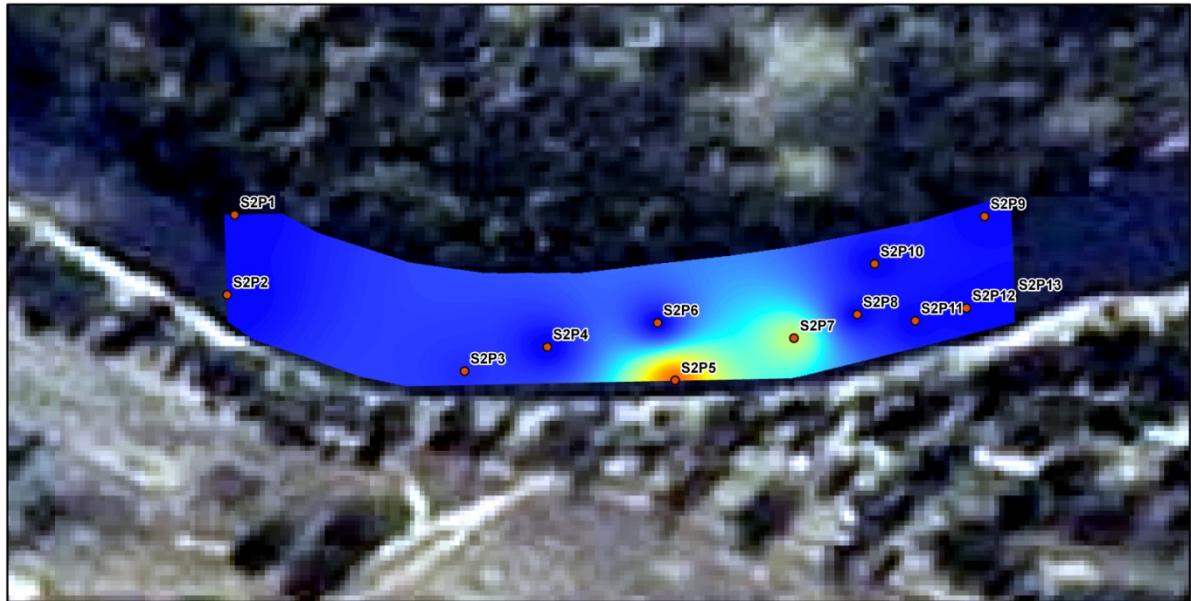


Figure 8-181. Spatial distribution of monosulfides at Site 2 (40-90 cm).

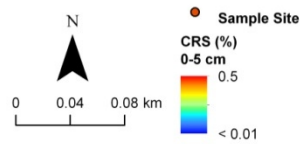
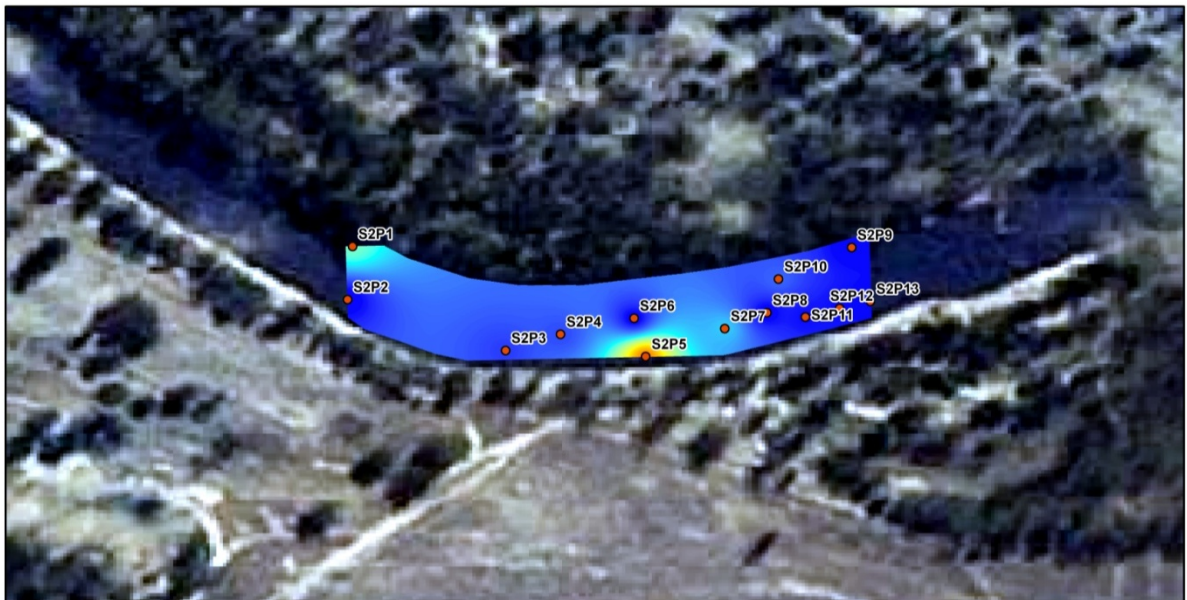


Figure 8-182. Spatial distribution of sulfides at Site 2 (0-5 cm).

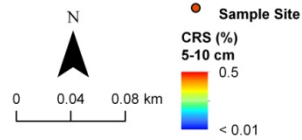
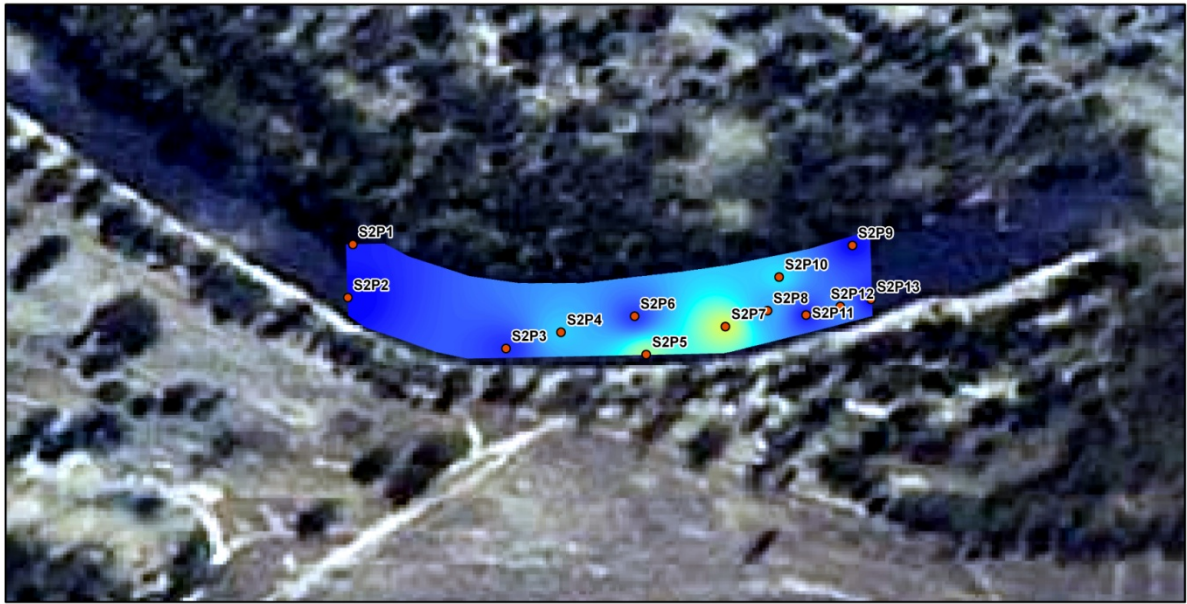


Figure 8-183. Spatial distribution of sulfides at Site 2 (5-10 cm).

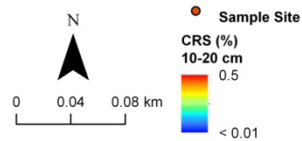
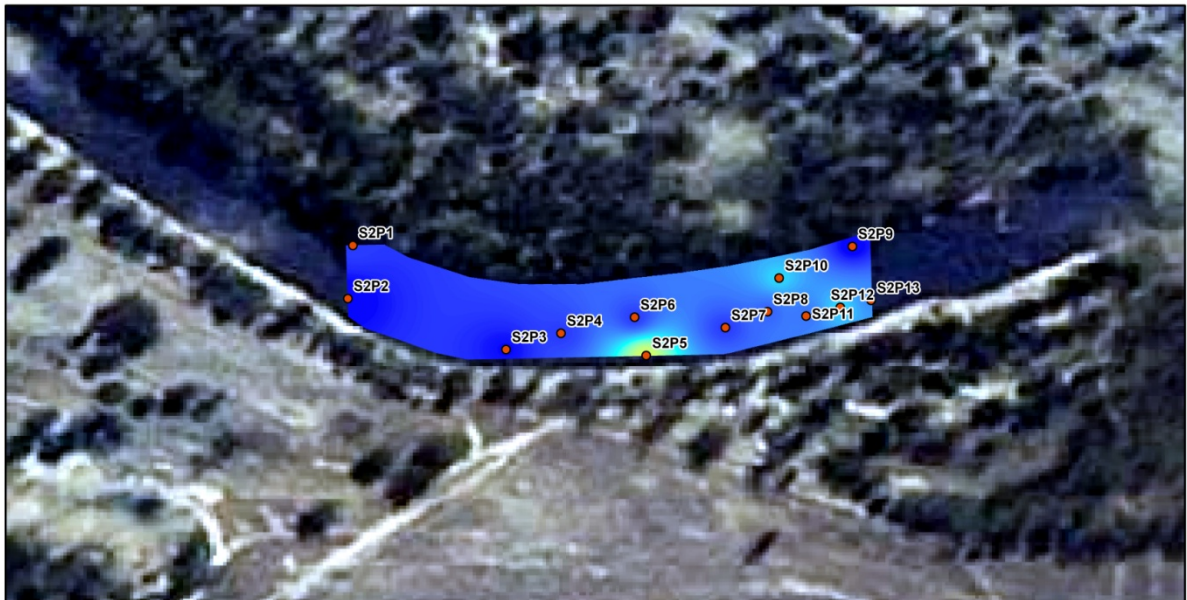


Figure 8-184. Spatial distribution of sulfides at Site 2 (10-20 cm).

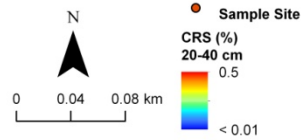
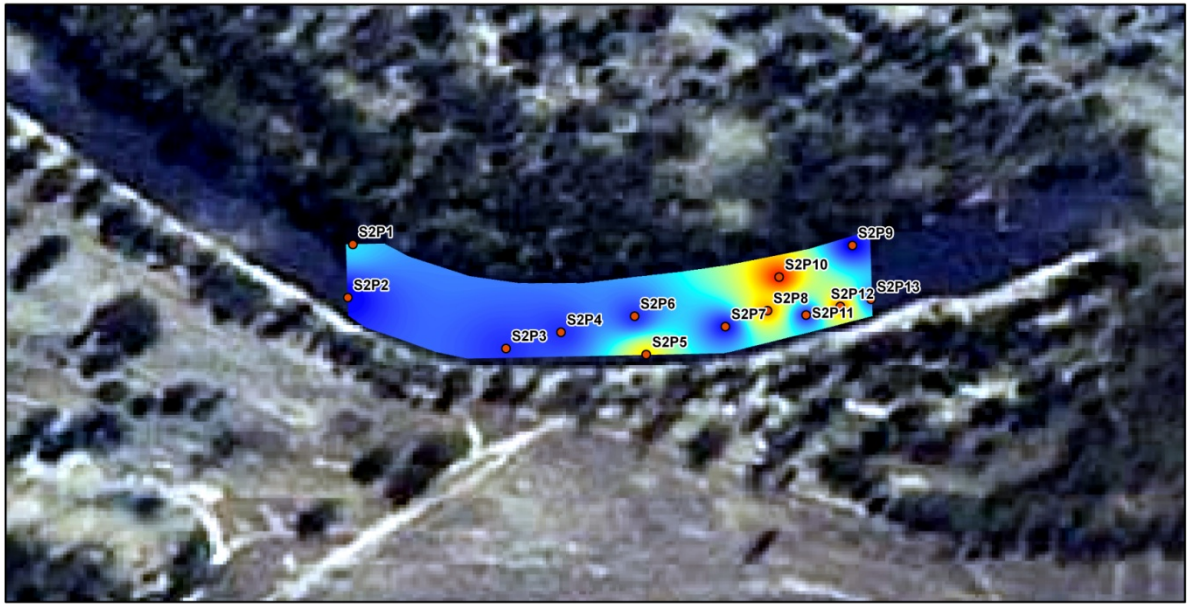


Figure 8-185. Spatial distribution of sulfides at Site 2 (20-40 cm).

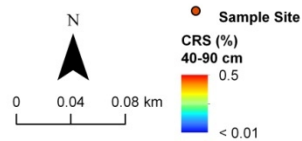
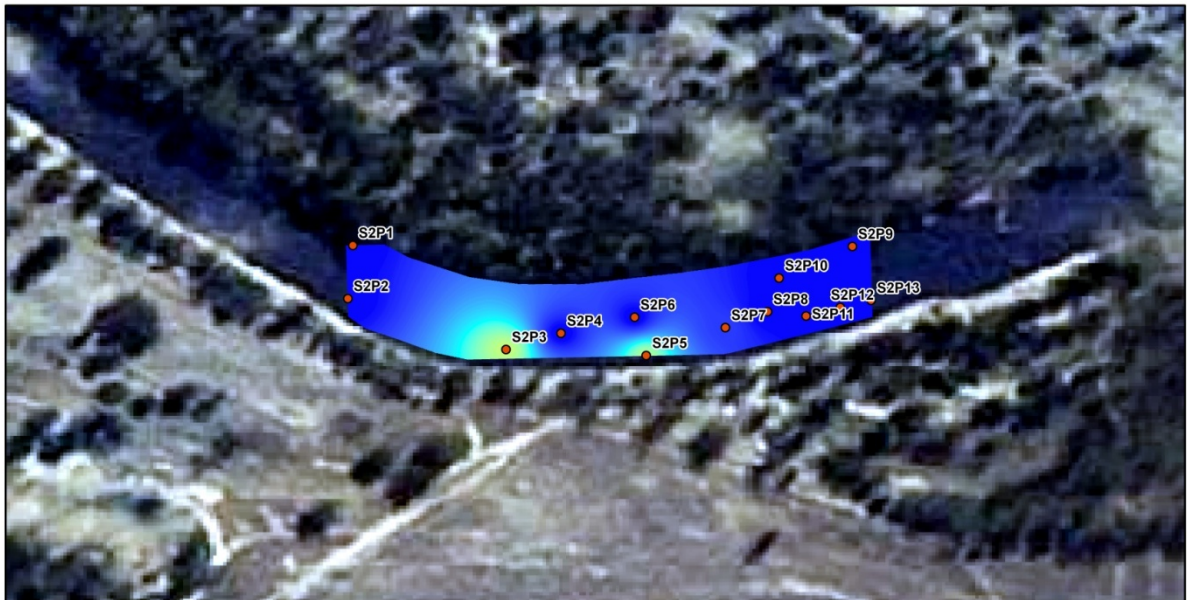


Figure 8-186. Spatial distribution of sulfides at Site 2 (40-90 cm).

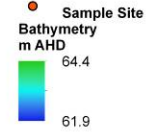
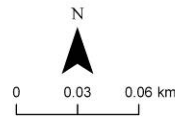
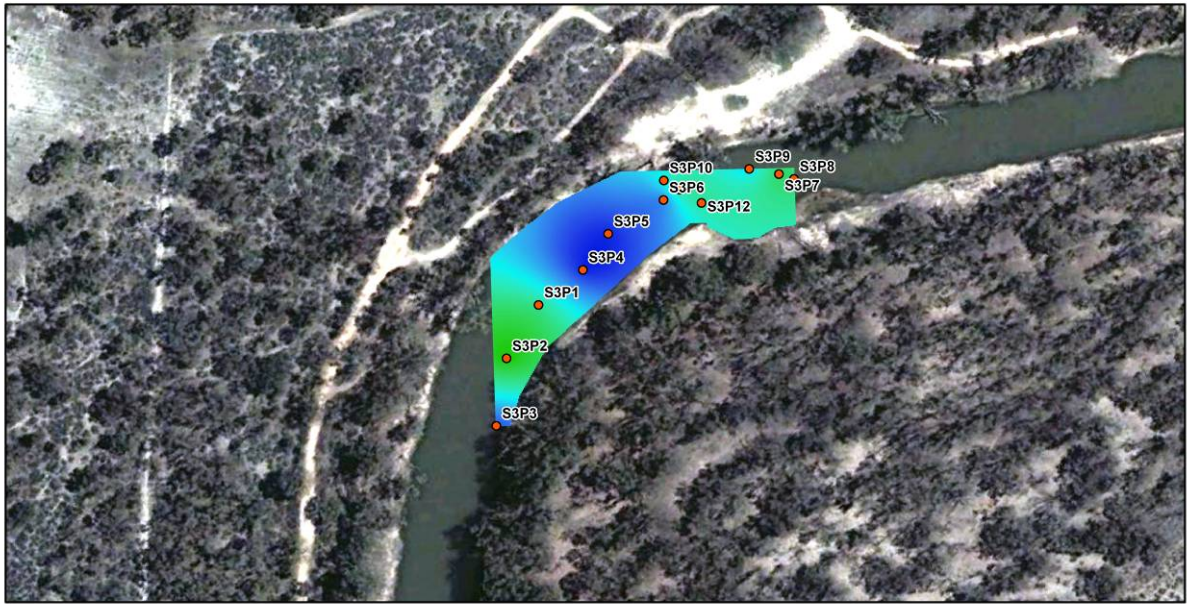


Figure 8-187. Bathymetry of channel at Site 3.

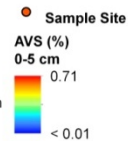
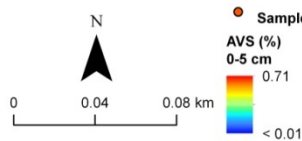
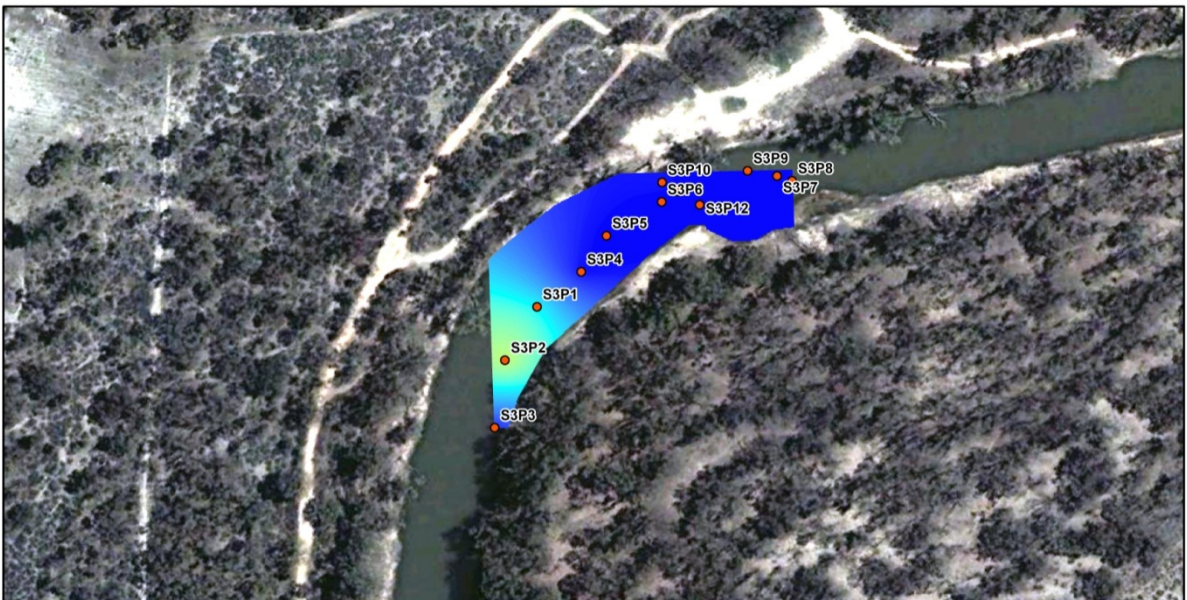
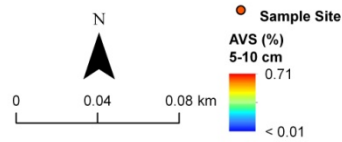
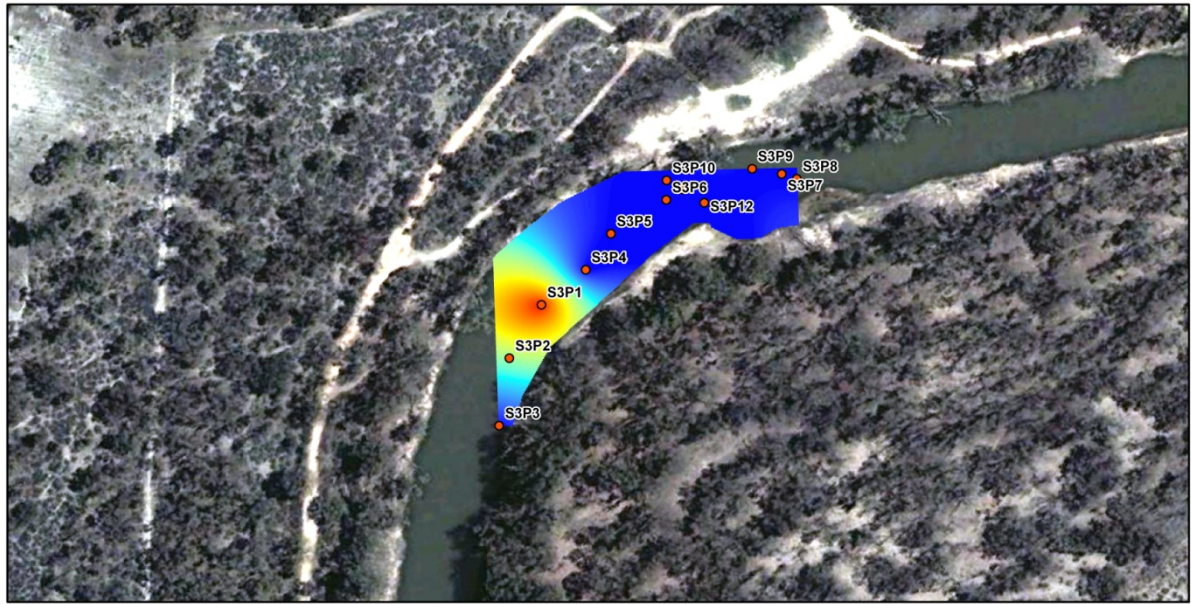
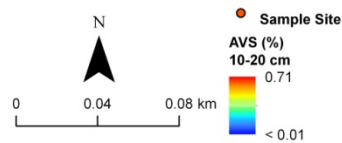
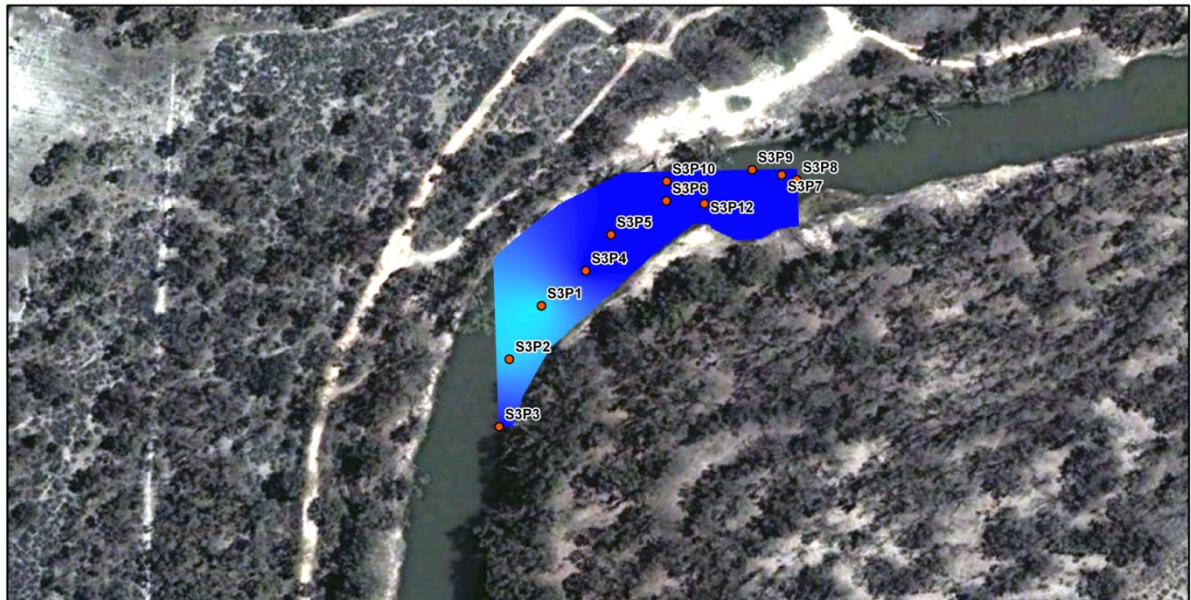


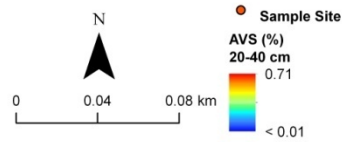
Figure 8-188. Spatial distribution of monosulfides at Site 3 (0-5 cm).



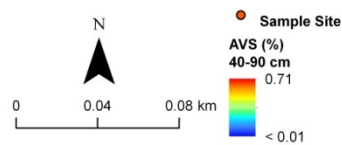
**Figure 8-189. Spatial distribution of monosulfides at Site 3 (5-10 cm).**



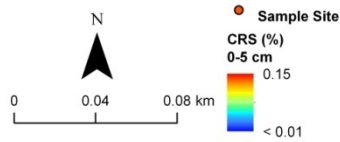
**Figure 8-190. Spatial distribution of monosulfides at Site 3 (10-20 cm).**



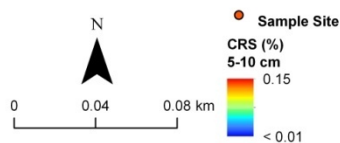
**Figure 8-191. Spatial distribution of monosulfides at Site 3 (20-40 cm).**



**Figure 8-192. Spatial distribution of monosulfides at Site 3 (40-90 cm).**

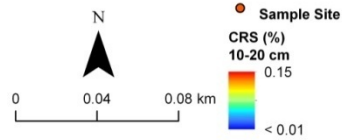
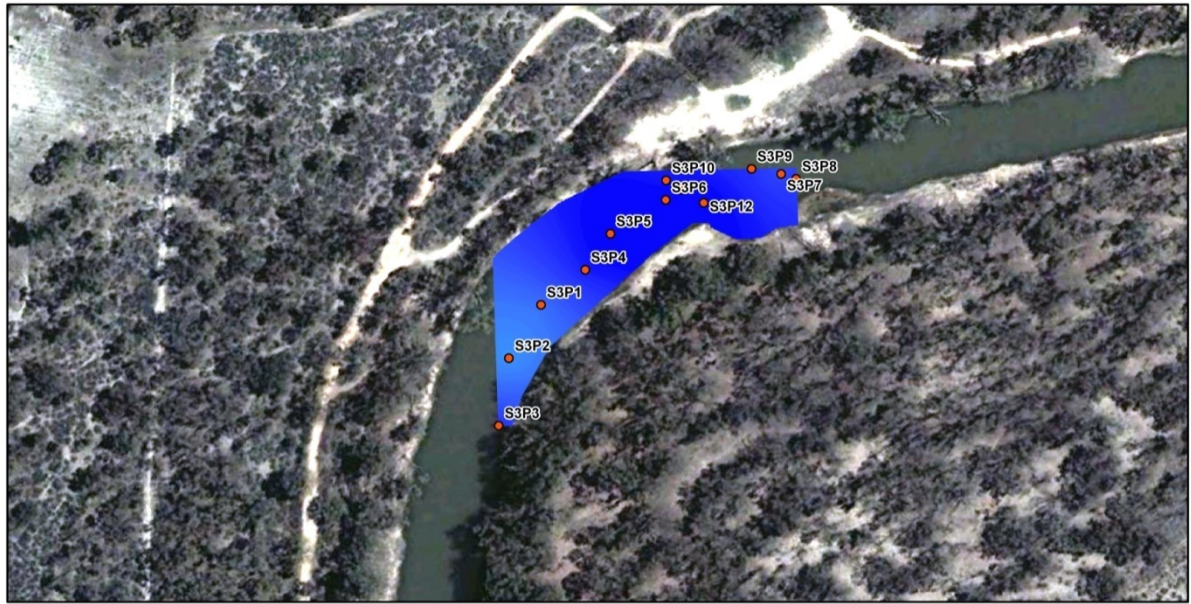


**Figure 8-193. Spatial distribution of sulfides at Site 3 (0-5 cm).**

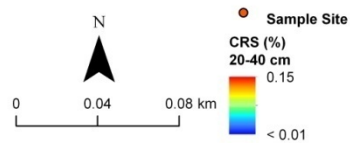
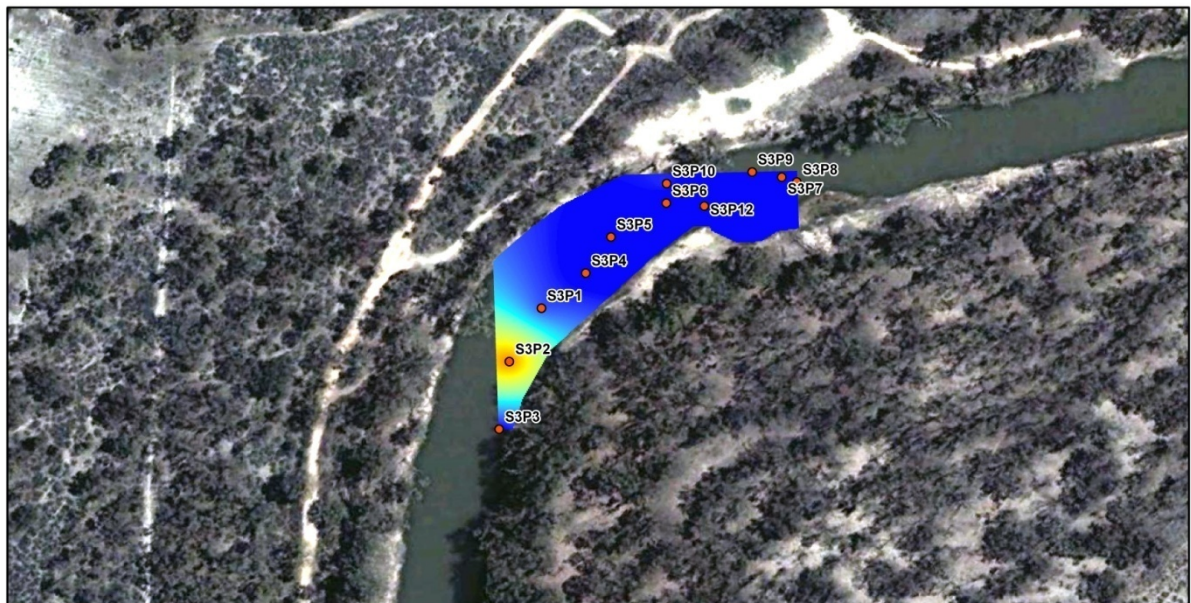


**Figure 8-194. Spatial distribution of sulfides at Site 3 (5-10 cm).**

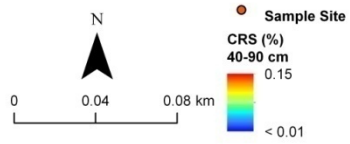
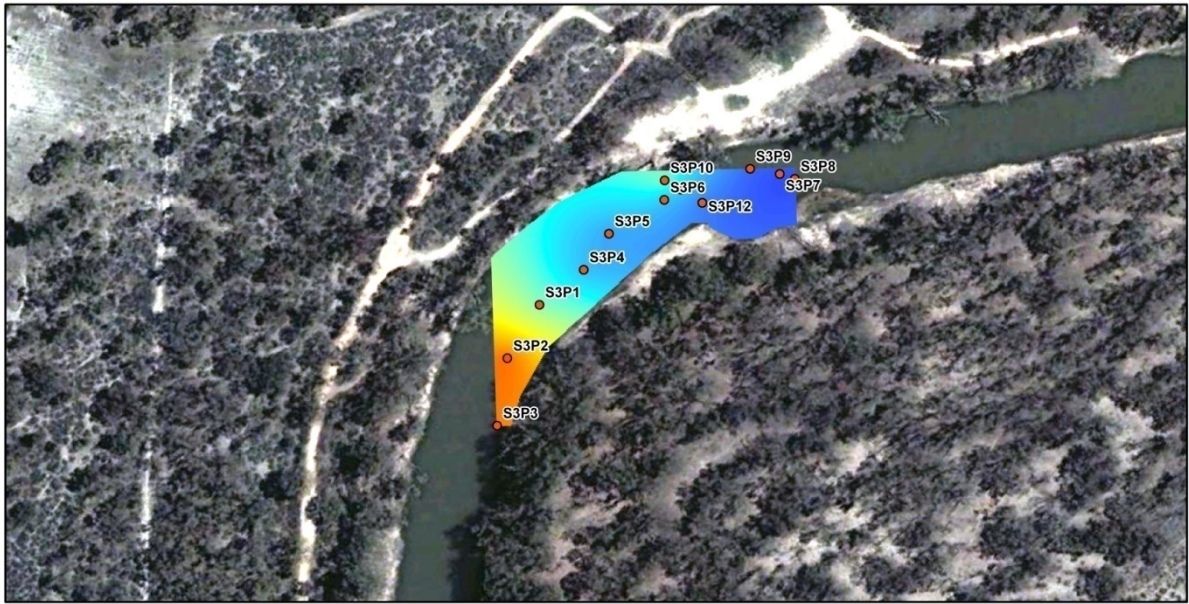




**Figure 8-195. Spatial distribution of sulfides at Site 3 (10-20 cm).**



**Figure 8-196. Spatial distribution of sulfides at Site 3 (20-40 cm).**



**Figure 8-197. Spatial distribution of sulfides at Site 3 (40-90 cm).**

## **Appendix 4. Additional photographs for Component 2.**



**Figure 8-198. Photograph of site at Gee Gee Bridge.**



**Figure 8-199. Photograph of site at Mallan Bridge.**



**Figure 8-200. Photograph of site at Wakool Weir.**



**Figure 8-201. Photographs of site at Yarrakool Creek, showing the site and the soil core.**



**Figure 8-202. Photographs of site at Kyalite, showing the site and the soil core.**